



SAVINGS

GLOBAL POWER MULTI-CURRENCY PLAN 3 (GP3)

Plan a brighter future with flexible multi-currency options

Citibank (Hong Kong) Limited is an appointed insurance agent for AIA International Limited (Incorporated in Bermuda with limited liability). This product brochure is issued by AIA and is for distribution by Citibank (Hong Kong) Limited in Hong Kong only.

Limited offer: 3-year premium payment term



AIA International Limited
(Incorporated in Bermuda with limited liability)



**HEALTHIER, LONGER,
BETTER LIVES**

ENHANCED CURRENCY EXCHANGE OPTION FOR YOU TO GAIN GLOBAL ADVANTAGES

Enjoy long-term wealth accumulation and pass your legacy onto future generations while achieving financial freedom for you and your loved ones

In a new era where people are ever more connected around the world, you need a well-curated wealth planning solution that helps you seize the opportunities not only locally, but globally. Whether you are funding your children's education overseas or to start life afresh overseas for personal pursuit or retirement, the flexibility of access to global currencies is crucial.

Global Power Multi-Currency Plan 3 adds extra flexibility into the **Currency Exchange Option** which is **exercisable from the end of the 2nd policy year**, giving you a head start to keep pace with global opportunities to meet your evolving wealth planning needs.



Broaden your global vision for new possibilities

Give children a running start with solid footing for the road ahead

- The total overseas education expenditure is often costly, exceeding **HK\$1 million**¹
- In past three years, the number of students who pursued further study outside of Hong Kong has increased by around **30%**²
- The average asset value that respondents plan to pass on is **HK\$4.29 million**³
- **60%** of the respondents who have legacy planning in place will use insurance plans to pass on their wealth³



Plan ahead to make the most of your golden years

- The average desired retirement age is **62**⁴
- **67%** of respondents do not have sufficient retirement funds, reporting a savings shortfall of up to **HK\$2.3 million**⁴
- Hong Kong's cost of living ranks the **2nd-most** expensive in the world⁵
- **85%** of respondents are considering or will consider moving abroad⁶



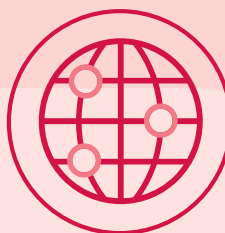
Remarks:

1. Source: <https://eduplus.hk/overseas/> and media news. A survey on overseas education expenditure conducted by GfK, which was commissioned by AIA (data collection date: April 2022)
2. Source: Hong Kong Education Bureau, "Secondary 6 Students' Pathway Survey" for 2019 to 2022 (data collection: June 2023)
3. Source: AIA commissioned market research company KANTAR to conduct "Hong Kong and Macau Segmentation Study 2021"
4. Source: The 13th AIA Desired Retirement Tracker 2021
5. Source: <https://www.eca-international.com/news/june-2023/hk-falls-one-place-to-2nd-most-expensive-location>. A research into cost of living for 2023 to rank 207 cities in 120 countries and territories around the world. (data collection date: June 2023)
6. Source: <https://www2.hkej.com/instantnews/current/article/3392983/> (media news: March 2023)

"AIA", "AIA Hong Kong", "the Company", "We", "our" or "us" herein refers to **AIA International Limited** (Incorporated in Bermuda with limited liability).

Plan Highlights

Seize global opportunities and achieve your life goals



- Up to **8 currency options** for you to access the advantages of global currencies
- **Currency Exchange Option** exercisable from the end of the 2nd policy year, being **the earliest time in the market*** you can change your policy currency
- **Policy Split Option** allows you to divide your policy into multiple policies for extra flexibility in asset planning

Smart financing with funding flexibility



- **Bonus Lock-in Option** to realise potential gains

First-in-market[^]

- **Bonus Unlock Option** for reallocating bonuses to enjoy potential returns

Allocate your assets seamlessly with a holistic suite of legacy planning tools



- Shield your loved ones with **Mental Incapacity Option**
- Change of Insured Option and Contingent Insured Option that can be **exercised for an unlimited number of times**
- Choose your **preferred settlement option** to pass on your legacy to future generations as you wish

Remarks:

* As of 15 September 2023, compared with savings insurance products provided by Hong Kong major insurance companies.

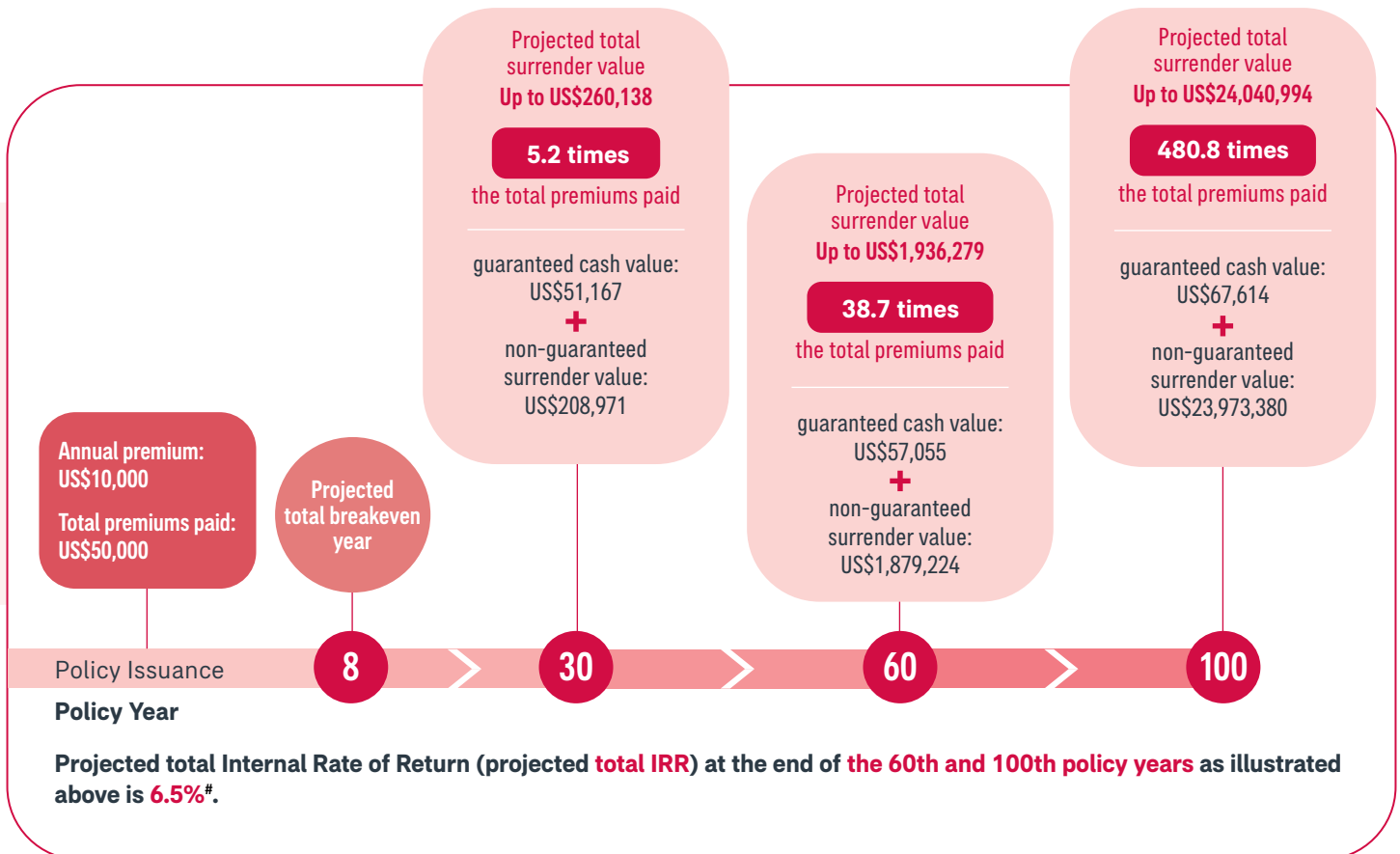
[^] Bonus Unlock Option was pioneered by AIA in the Global Power Multi-Currency Plan 2 on 5 October 2022.

For more details of the above product features, please refer to "Cover at a glance" in this brochure.

Achieve long-term wealth accumulation with potentially competitive returns

(The following example is hypothetical and for illustrative purposes and reference only. Actual bonuses are not guaranteed and are declared at AIA's sole discretion, and are subject to the terms of the policy.)

The potential returns you can enjoy if you choose US\$ as the policy currency with a 5-year premium payment:



Remarks:

- # The projected total IRR on projected Total Surrender Value in this illustrative example is capped at 6.5% per annum. It is neither indicative of future performance nor guaranteed. In the worst case scenario, the actual total IRR can be equal to guaranteed IRR which is 0.31% at the end of the 100th policy year.
- The projected total surrender value illustrated is the sum of the policy's guaranteed cash value plus the non-guaranteed cash values of Reversionary Bonus (if any) and Terminal Bonus (if any) and is based on the current projected surrender value and bonus scales. The current projected surrender value and bonus scales are neither indicative of future performance nor are they guaranteed. Past performance or current performance of our business should not be interpreted as a guide for future performance. The actual face values and cash values of the Reversionary Bonus (if any) and Terminal Bonus (if any) payable throughout the duration of the policy are non-guaranteed and may vary from year to year at AIA's sole discretion, which may be greater or less than the previously declared amounts based on a number of factors and may be less or more favourable than those illustrated and may be zero. The above example assumes that no cash withdrawal and no policy loans are taken throughout the term of the policy, and that Bonus Lock-in Option, Bonus Unlock Option, Currency Exchange Option, Policy Split Option and Mental Incapacity Option are not exercised.
- The projected total breakeven year is not guaranteed. The projected total IRR at the end of 100th policy year is rounded to the nearest percentage and is not guaranteed. The actual total IRR at the end of 100th policy year may be higher or lower than that illustrated. The projected total IRR at the end of 100th policy year assumes that (i) all premiums are paid in full when due and as planned; (ii) the total premiums paid excludes the levy collected by the Insurance Authority; (iii) no death benefit or surrender value has been paid before or becomes payable; (iv) no withdrawal has been made and no indebtedness under the policy; (v) the principal amount of the policy remains unchanged throughout the policy term and (vi) Bonus Lock-in Option, Bonus Unlock Option, Currency Exchange Option, Policy Split Option and Mental Incapacity Option are not exercised. The calculation of the projected total IRR at the end of 100th policy year takes into account: (i) the total premiums paid during the premium payment term for the basic plan; and (ii) the projected total surrender value at the end of the 100th policy year.



Up to 8 policy currency options for diversified planning

Global Power Multi-Currency Plan 3 is a **participating whole-life insurance plan** under the Global Power Series (a product series that includes designated participating insurance plan from time to time). It covers the entire lifespan of the insured (who is the person protected under the policy). You can select from up to 8 currencies at the time of policy application, which include Renminbi (RMB), British pound sterling (GBP), US dollar (US\$), Australian dollar (AUD), Canadian dollar (CAD), HK dollar (HK\$), Euro (EUR) and Singapore dollar (SGD), each may offer different policy returns.





Currency Exchange Option exercisable from the end of the 2nd policy year for extra flexibility

We understand that global opportunities are evolving. To give you a head-start with enhanced flexibility, starting from the end of the 2nd policy year and thereafter within 30 days after the end of each policy year, through the Currency Exchange Option, you can change the policy currency to another currency as listed above.

There will be no changes to the current policy effective date and the policy values will be recalculated and continue to accumulate based on the return of the new policy currency, so you can capture opportunities more flexibly in the dynamic world to meet your financial goals.

Please refer to “Cover at a glance”, “Key Product Risks” and additional important information points 31-35 for further details.

For more details on the Currency Exchange Option, please refer to “Cover at a glance” and “Key Product Risks” in this brochure.



Accumulate wealth with one-time, 3-year, 5-year and 10-year premium payment term options

Global Power Multi-Currency Plan 3 can help you achieve guaranteed and potential gains. To suit your long-term wealth accumulation needs and your budget, you can choose a one-time premium payment term, a 3-year premium payment term (limited time offer), a 5-year premium payment term or a 10-year premium payment term to help meet your different financial goals.

The plan helps accumulate wealth by offering guaranteed cash value and starting from the end of the 3rd policy year, it declares the non-guaranteed **Reversionary Bonus** (if any) and non-guaranteed **Terminal Bonus** (if any) to your policy at least once per year.

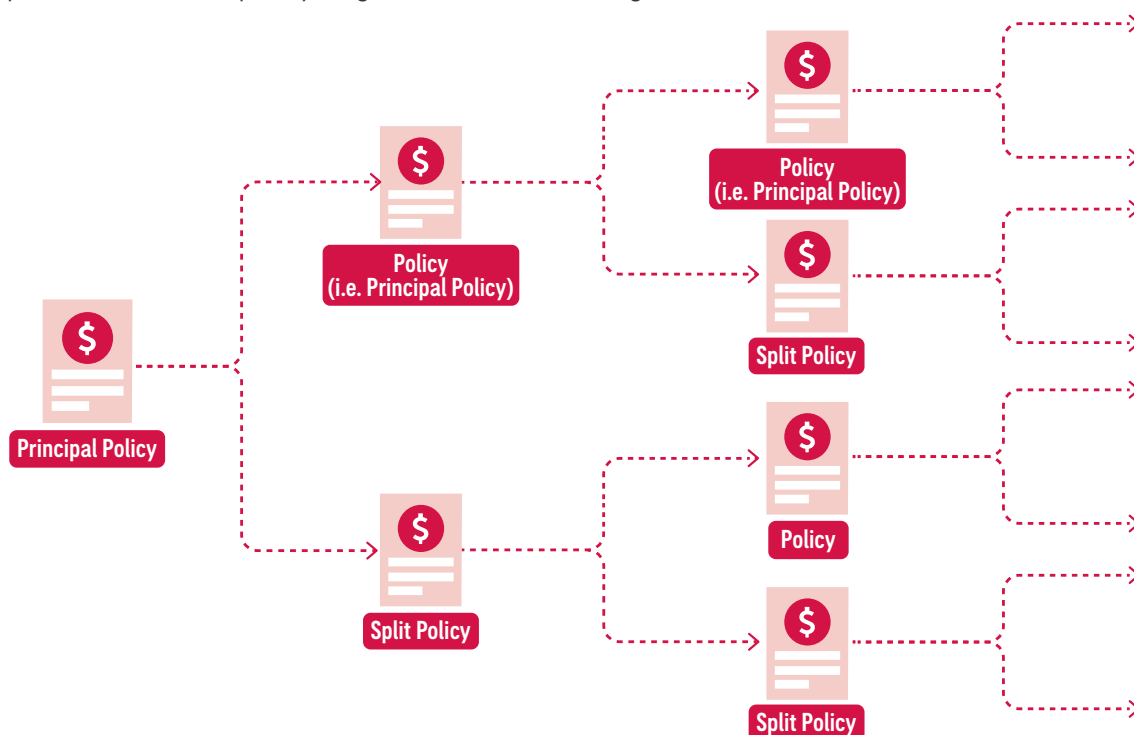




Policy Split Option enables flexible asset allocation

After the end of the 3rd policy year or the end of the premium payment term, whichever is later, you can exercise the Policy Split Option according to your needs and transfer certain policy values from the current policy to a separate policy, splitting one policy into two. The current policy will continue to be effective with no change in effective date, and the policy effective date of the split policy will be the same as the current policy.

You can apply for a change of policy currency and change of insured after the policy is split. This flexibility allows you to allocate your assets strategically by holding multi-currency policies, helping to create the legacy you envision for the generations to come, or prepare funds to accomplish your goals at different life stages.





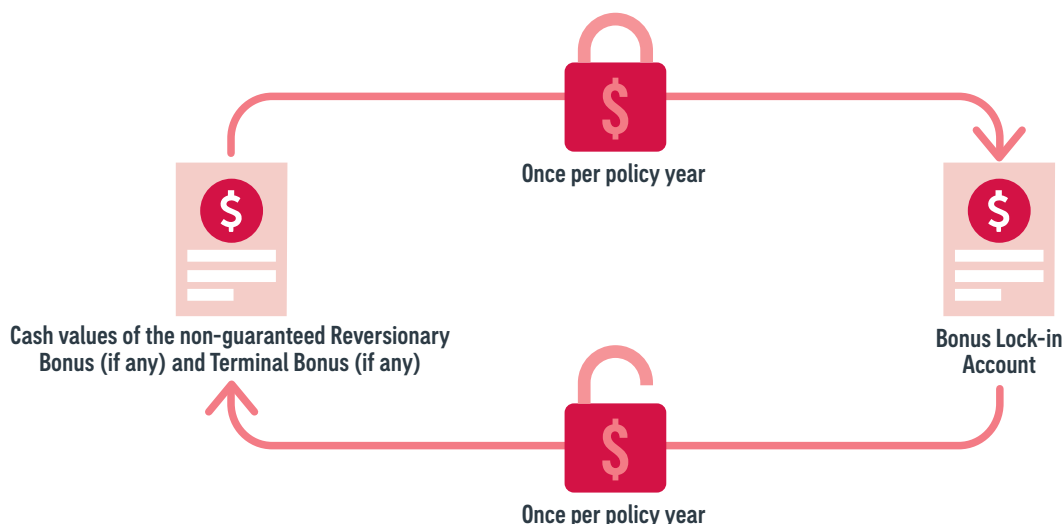
Bonus Lock-in Option and Bonus Unlock Option cater to your evolving financial needs

It is crucial to secure your hard-earned asset, especially when facing the uncertainty of the global market. Through the Bonus Lock-in Option, **Global Power Multi-Currency Plan 3** enables you to realise potential returns by transferring the latest cash values of the Reversionary Bonus (if any) and Terminal Bonus (if any) into a Bonus Lock-in Account to earn interest at a non-guaranteed rate. This is available once per policy year, after the end of the 15th policy year and within 30 days after the end of each policy year.

To provide flexibility for your financial needs throughout various life stages, you can withdraw cash from the Bonus Lock-in Account anytime without reducing the principal amount of your policy.

First-in-market[^] Bonus Unlock Option

By exercising the Bonus Unlock Option, you can even unlock a certain amount of the latest value of the Bonus Lock-in Account as non-guaranteed Reversionary Bonus (if any) and Terminal Bonus (if any) to suit your financial needs. This is available once per policy year, starting from one year after bonus lock-in and within 30 days after the end of each policy year.



Withdraw cash flexibly to fulfil your changing needs

With **Global Power Multi-Currency Plan 3**, you can withdraw your policy values to make your visions a reality. To address your changing needs in the future, upon request, you can withdraw part of the guaranteed cash value and the non-guaranteed cash values of the Reversionary Bonus (if any) and Terminal Bonus (if any). However, this will reduce the future values of your policy. After withdrawal, the principal amount of the policy and the total premiums paid or one-time premium paid (as applicable) for the basic plan under the death benefit may be reduced.

Alternatively, you may choose to withdraw all cash values in the policy. Upon such withdrawal, you will receive the sum of the guaranteed cash value, non-guaranteed cash values of the Reversionary Bonus (if any) and Terminal Bonus (if any), and any remaining balance of the Bonus Lock-in Account (if applicable), and your policy will be terminated.

We will deduct all outstanding debt (if any) under the policy before we make any payments for your withdrawal.

[^] Bonus Unlock Option was pioneered by AIA in the Global Power Multi-Currency Plan 2 on 5 October 2022.



Change of Insured Option and Contingent Insured Option add extra flexibility for you to pass on your legacy

During the lifetime of the current insured and after the end of the 1st policy year, the Change of Insured Option allows you to change the insured to another loved one as many times as you wish. That way, the value of your policy will not be affected and can be inherited by future generations, helping you pass on your wealth with ease.

With the Contingent Insured Option, during the lifetime of the current insured, you can designate one of your loved ones as the contingent insured. There is no limit on the number of times you can designate, modify or remove a contingent insured during the lifetime of the current insured. Upon the passing of the current insured, the contingent insured may become the new insured without affecting your policy values and your policy will continue to be effective, so as to safeguard your legacy for the generations to come.



Mental Incapacity Option gives your family extra peace of mind in the face of the unknown

Global Power Multi-Currency Plan 3 provides Mental Incapacity Option in case you will be suffering from a mental issue and may require funds for expenses. You may designate in advance the designated percentage of policy value and an aged 18 or above family member as a designated recipient. In the event you are diagnosed as a permanent mentally incapacitated person, upon our approval of the designated recipient's application and subject to applicable laws and our prevailing rules and conditions, he / she may receive payment equal to your designated percentage of policy value. After payment has been made under this option, any remaining policy value may continue to grow over time in the future.

We will deduct all outstanding debt (if any) under the policy before we make any payment under this option.



Choose your settlement option to pass on your assets to future generations as you wish

If the insured passes away and no contingent insured becomes the new insured, we will pay the death benefit to the person whom you select in your policy as beneficiary.

To ease the financial burden of your loved ones during unforeseen challenges, **Global Power Multi-Currency Plan 3** offers extra protection through an accidental death benefit. This is paid in addition to the death benefit if the insured passes away due to a covered accident within the first year of the policy.

Apart from a lump sum payment, you can customise the Death Benefit Settlement Option while the insured is still alive so as to allow your beneficiary to receive the death benefit and accidental death benefit in regular instalments. You can select not only the benefit amounts to be paid for each instalment, but also the date of the first instalment payment of death benefit and accidental death benefit.



Rewards for academic excellence

To motivate the insured to strive for academic excellence, we will reward academic achievements by offering the Educational Merit Benefit. Once the policy has been in force for at least one year, if the insured obtains any one of the following achievements before the age of 25, **Global Power Multi-Currency Plan 3** will pay the corresponding award amount while the policy is in force. The Educational Merit Benefit will only be payable once per life under all **Global Power Multi-Currency Plan 3** policies.

Educational Merit Benefit

Category	Achievement	Award Amount [#]
Hong Kong Diploma of Secondary Education (HKDSE)	At least three 5* grades or above from at least six subjects in one sitting	US\$280 for each 5* grade or above
Test of English as a Foreign Language (TOEFL)	Total score of 110 or above	US\$680
International English Language Test System (IELTS)	Overall band score of 8 or above	US\$680
SAT	Total score of 1,500 or above	US\$680
International Baccalaureate Diploma Programme (IBDP)	Total score of 41 or above	US\$680
University admission	Successful admission to any of the world's top ten universities [^]	US\$2,800

[#] If the policy is issued in a currency other than US\$, the award amount would be available in the respective policy currency and the prevailing exchange rate will be used to calculate the above amounts.

[^] The ranking is based on a source as determined by us from time to time. For the latest details, please visit our website aia.com.hk.



Flexible premium payment terms

Global Power Multi-Currency Plan 3 offers the choice of four premium payment terms, facilitating flexible planning depending on your current outlook. You can choose a one-time premium payment or spread payments over a 3-year period (limited time offer), a 5-year period or a 10-year period. Premium amounts are guaranteed to be fixed throughout the payment period. For 3-year, 5-year and 10-year premium payment terms, the premium can be paid annually, semi-annually, quarterly or monthly.

Premium Payment Term	Insured's Age at Application	Benefit Term
One-time premium payment	15 days to age 80	Whole life
3 years (limited time offer)	15 days to age 75	
5 years		
10 years	15 days to age 70	



Extend grace period for premium payments

You may encounter an unexpected change that may cause an impact on your finances. Should one of the specified events happen to you during the premium payment term of the basic plan, you may claim for the Extension of Grace Period Benefit (not applicable to one-time premium payment). We will extend the grace period for late premium payment from 31 days to up to 365 days to give you extra financial flexibility while keeping the insured protected and the policy effective.

For more details of this benefit, please refer to "Cover at a glance" in this brochure.



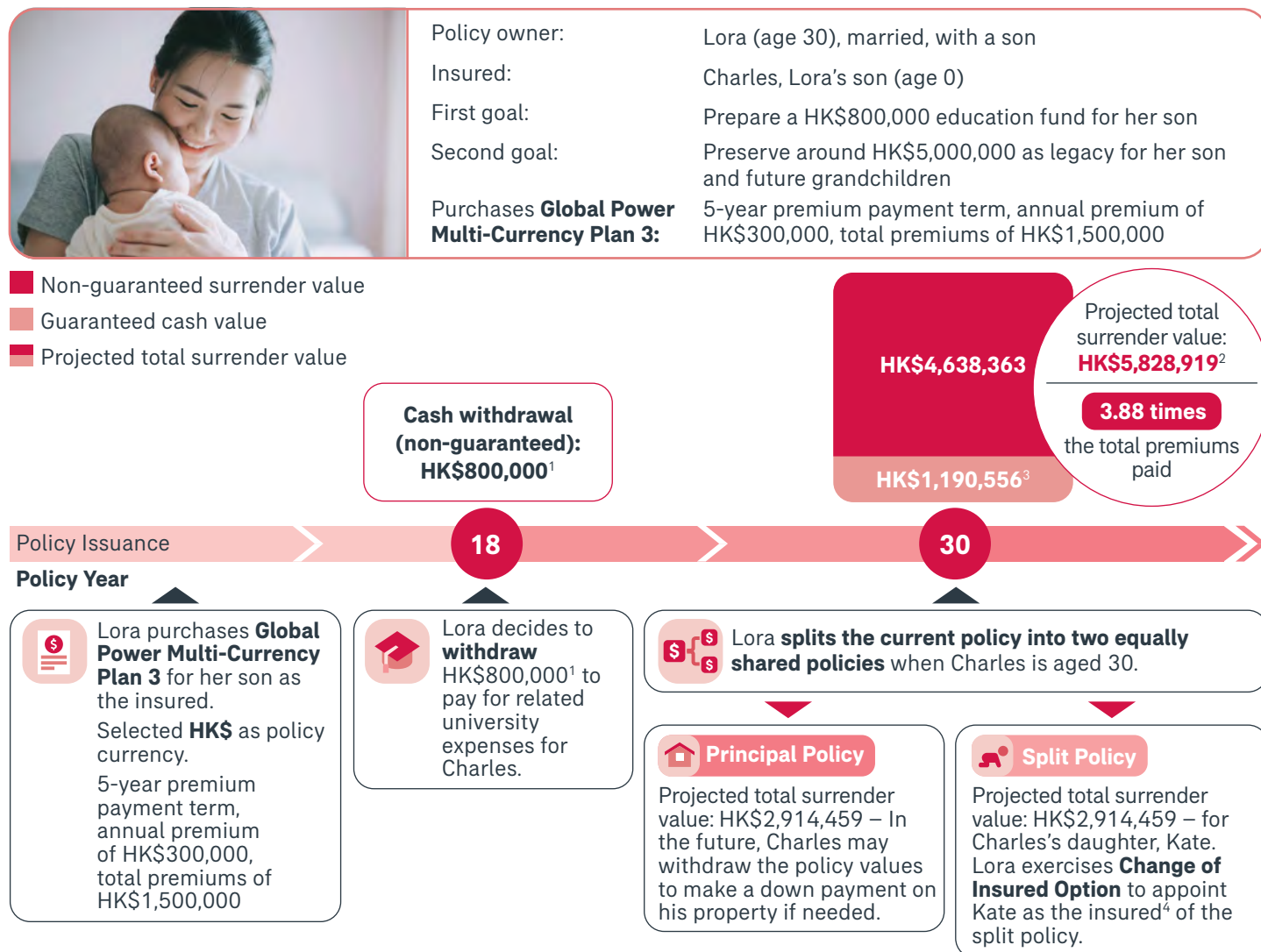
Add-on cover for extra protection

All add-on plans (if any, not applicable to one-time premium payment) are subject to additional premiums, underwriting and exclusions. All benefits under add-on plans will be terminated when your **Global Power Multi-Currency Plan 3** terminates.

EXAMPLES

(The following examples are hypothetical and are for illustrative purposes and reference only. Actual bonuses are not guaranteed and are declared at AIA's sole discretion, and are subject to the terms of the policy.)

Case 1



- The cash withdrawal amount under **Global Power Multi-Currency Plan 3** is non-guaranteed. The actual cash withdrawal amount may vary according to the actual non-guaranteed benefit payable. Any cash withdrawal will first be deducted from the cash value of the encashable Reversionary Bonus (if any) and the associated Terminal Bonus (if any) (collectively, the "Cash Value of Encashable Bonuses"), and then any withdrawals which exceed the remaining balance of the Cash Value of Encashable Bonuses will be deducted from the guaranteed cash value and the associated cash value of the Terminal Bonus (if any) (declared after the end of the 3rd policy year), which in turn will reduce the principal amount of the policy. Therefore, the subsequent guaranteed cash value, face value and cash value of the Reversionary Bonus (if any) and of the Terminal Bonus (if any) and total premiums paid as used in the calculation of the Death Benefit will be adjusted accordingly based on the reduced principal amount and the amounts will be less than the projections made without cash withdrawal. Please contact our company to obtain illustrative documents for details of the cash withdrawal mentioned in the case above. This policy will be terminated when the total surrender value has been withdrawn entirely.
 - The projected total surrender value illustrated is the sum of the policy's guaranteed cash value plus the non-guaranteed cash values of Reversionary Bonus (if any) and of the Terminal Bonus (if any) and is based on the current projected surrender value and bonus scales. The current projected surrender value and bonus scales are neither indicative of future performance nor are they guaranteed. Past performance or current performance of our business should not be interpreted as a guide for future performance. The actual face values and cash values of the Reversionary Bonus (if any) and Terminal Bonus (if any) payable throughout the duration of the policy may vary from year to year at AIA's sole discretion, which may be greater or less than the previously declared amounts based on a number of factors and may be less or more favourable than those illustrated and may be zero. The above example assumes that no policy loans are taken throughout the term of the policy, the Currency Exchange Option, Bonus Lock-in Option, Bonus Unlock Option and Mental Incapacity Option are not exercised, and that all premiums are paid in full when due. To receive the amounts illustrated, the policy owner must surrender his policy at the end of the respective policy year. This policy will be terminated when the total surrender value has been withdrawn entirely.
 - The guaranteed cash value is calculated based on the projected principal amount at the end of each policy year. The actual principal amount calculated after each partial surrender may be more or less than the projected figures for each policy year. Thus, the actual guaranteed cash value will be based on the actual principal amount calculated at the end of each policy year.
 - The Change of Insured Option and Policy Split Option are subject to our approval. For details of the rules and regulations, please refer to "Cover at a glance" and "Key Product Risks" in this brochure.
- All figures stated in the illustrative examples are rounded to the nearest whole integer.

Case 2



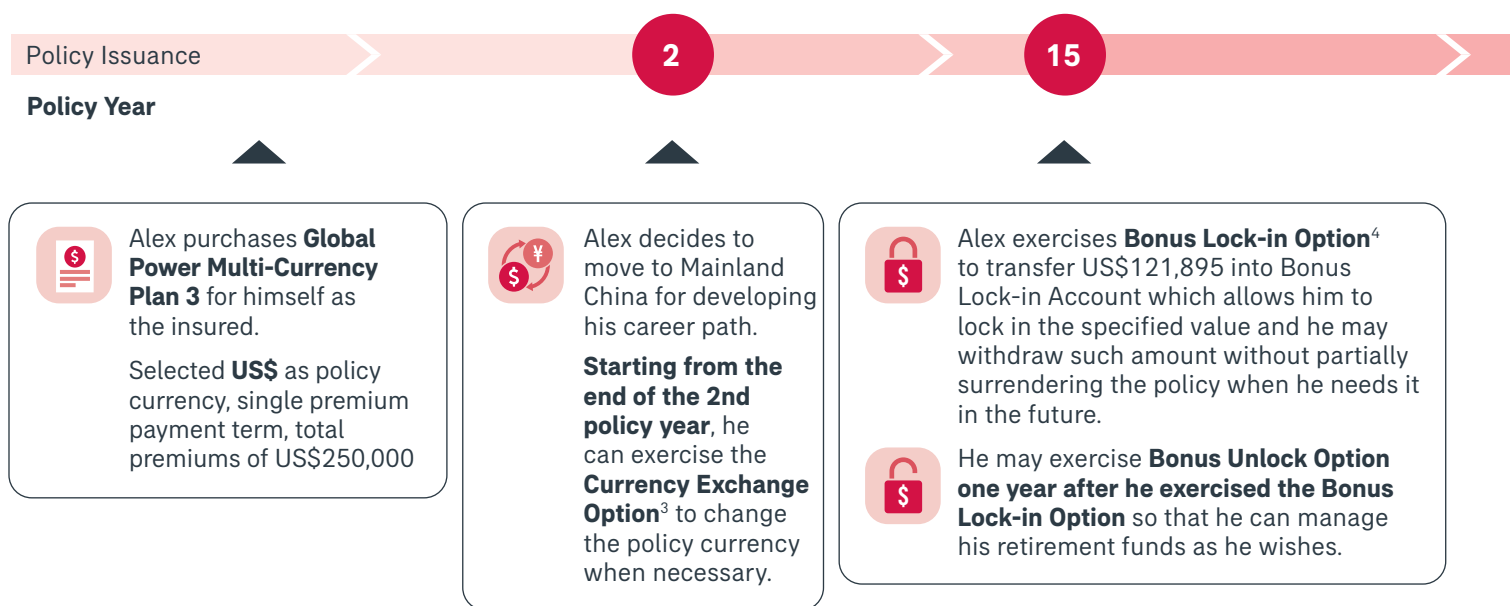
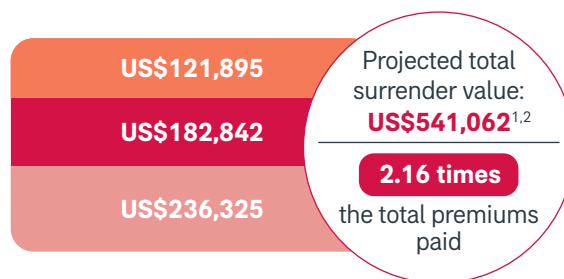
Policy owner and insured: Alex (age 40), married, with no children

First goal: Relocate to another country for better career opportunities with a saving tool that gives him flexibility to convert his savings to another currency in the future

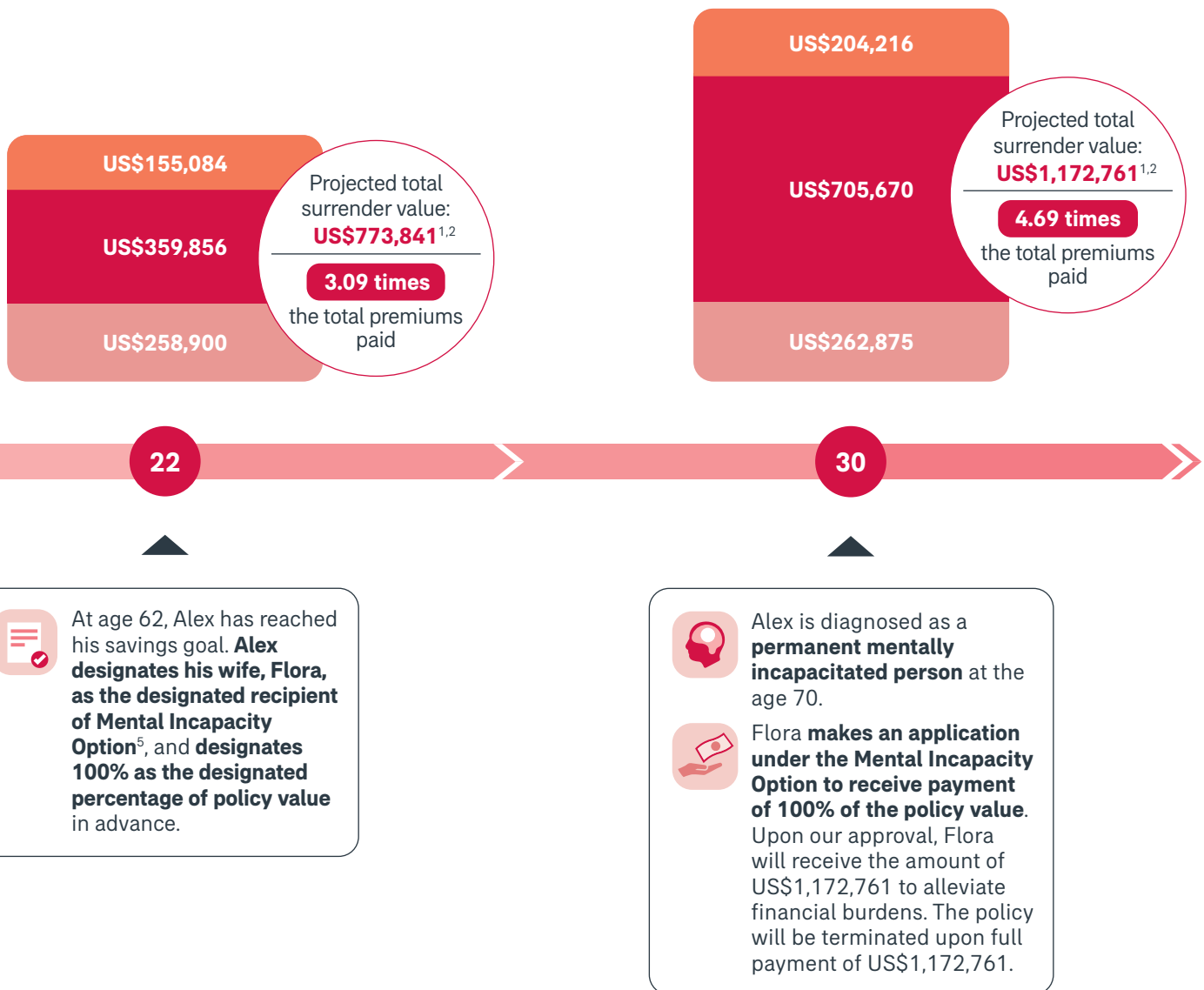
Second goal: Prepare around US\$600,000 as retirement fund at age 62

Purchases **Global Power Multi-Currency Plan 3**: Single premium payment term, total premium of US\$250,000

- Bonus Lock-in Account value
- Non-guaranteed surrender value
- Guaranteed cash value
- Projected total surrender value



- The projected total surrender value illustrated is the sum of the policy's guaranteed cash value plus (i) the non-guaranteed cash values of the Reversionary Bonus (if any) and of the Terminal Bonus (if any) and (ii) Bonus Lock-in Account value (if any) and is based on the current projected surrender value and bonus scales. The current projected surrender value and bonus scales are neither indicative of future performance nor are they guaranteed. Past performance or current performance of our business should not be interpreted as a guide for future performance. The actual face values and cash values of the Reversionary Bonus (if any) and Terminal Bonus (if any) payable throughout the duration of the policy may vary from year to year at AIA's sole discretion, which may be greater or less than the previously declared amounts based on a number of factors and may be less or more favourable than those illustrated and may be zero.
- The above example assumes that no cash withdrawal or no policy loans are taken throughout the term of the policy, Policy Split Option and Bonus Unlock Option are not exercised, and that all premiums are paid in full when due. To receive the amounts illustrated, the policy owner must surrender his policy at the end of the respective policy year. This policy will be terminated when the total surrender value has been withdrawn entirely.



- From the end of the 2nd policy year onwards, you can choose to exercise the Currency Exchange Option within 30 days after the end of each policy year. This option can only be exercised once per policy year and is subject to our approval. For details of the rules and regulations, please refer to "Cover at a glance" and "Key Product Risks" in this brochure.
- From the end of the 15th policy year onwards, you can choose to exercise the Bonus Lock-in Option. For details of the rules and regulations of the Bonus Lock-in Option, please refer to "Cover at a glance" in this brochure.
- The designation of a designated recipient and the percentage of policy value under the Mental Incapacity Option is subject to our approval, applicable laws and our prevailing rules and conditions. For details of the Mental Incapacity Option, please refer to "Cover at a glance" and "Key Product Risks" in this brochure.

All figures stated in the illustrative examples are rounded to the nearest whole integer.

Cover at a glance

Premium Payment Term	One-time		3-year (limited time offer)		5-year		10-year	
Insured's Age at Application	15 days to age 80		15 days to age 75		15 days to age 75		15 days to age 70	
Benefit Term	Whole life		Whole life		Whole life		Whole life	
Policy Currency and Minimum One-time / Annual Premium	RMB	45,000	RMB	12,000	RMB	12,000	RMB	8,400
	GBP	4,500	GBP	1,200	GBP	1,200	GBP	840
	US\$	7,500	US\$	2,000	US\$	2,000	US\$	1,400
	AUD	7,500	AUD	2,000	AUD	2,000	AUD	1,400
	CAD	7,500	CAD	2,000	CAD	2,000	CAD	1,400
	HK\$	56,250	HK\$	15,000	HK\$	15,000	HK\$	10,500
	EUR	5,250	EUR	1,400	EUR	1,400	EUR	980
	SGD	9,000	SGD	2,400	SGD	2,400	SGD	1,680

Principal Amount	For calculation of the premium and relevant policy values only and will not be payable as the death benefit.
-------------------------	--

Currency Exchange Option The Currency Exchange Option allows you to change your policy currency to another currency as selected by you (including Renminbi (RMB), British pound sterling (GBP), US dollar (US\$), Australian dollar (AUD), Canadian dollar (CAD), HK dollar (HK\$), Euro (EUR) and Singapore dollar (SGD)), by exchanging your plan (i.e. **Global Power Multi-Currency Plan 3**) to the latest plan under the Global Power Series in your designated policy currency, while maintaining the policy duration and without requiring any medical examination.

Before you apply

- From the end of the 2nd policy year onwards, you can choose to exercise the Currency Exchange Option within 30 days after the end of each policy year. This option can only be exercised once per policy year and is subject to our approval.
- All outstanding debt (if any) in the policy must be settled before we approve your application. An application for exercising the Currency Exchange Option cannot be changed or withdrawn once the completed and signed application has been submitted.
- The principal amount of the policy after the Currency Exchange Option is exercised must not be less than the minimum amount we permit at the time of your application for exercising the Currency Exchange Option.

Once your application is approved

- The currency of add-on plan(s) (if any) should be the same as the currency of the basic plan. If the existing add-on plan is not available in the new currency, the relevant add-on plan will be terminated when the application for exercising the Currency Exchange Option is approved. For the avoidance of doubt, the insured will lose the coverage of such add-on plan.
- The guaranteed and non-guaranteed policy values and any future premiums during and after exercising the Currency Exchange Option (i) will be determined and adjusted based on factors including but not limited to the prevailing market-based currency exchange rate (determined by us at our discretion), the investment yield and asset values of the existing and new underlying portfolio of assets, and / or the transactions from the existing to new assets; and (ii) may be lower or higher than the corresponding value before the exchange.
- Currently, there are no additional fees or charges when you apply for exercising the Currency Exchange Option, and the fees and charges are to be determined at AIA's discretion from time to time. For the avoidance of doubt, such fees and charges are independent from the above mentioned adjustment on guaranteed and non-guaranteed policy values and any future premiums.

Please refer to “Key Product Risks” in this brochure for more details of related risks.

Cover at a glance (continued)

Policy Split Option

The Policy Split Option allows you to transfer certain policy values from the current policy to a separate policy ("Split Policy") based on the split percentage requested by you while maintaining the policy duration and without requiring a medical examination.

Before you apply

- From the later of the end of the 3rd policy year or the end of the premium payment term onwards, you can choose to exercise the Policy Split Option. This option can only be exercised once per policy year.
- All outstanding debt (if any) in the policy must be settled before we approve your application. Also, there must not be any claims in progress under the policy when you apply for the Policy Split Option. An application for the Policy Split Option cannot be changed or withdrawn once it has been submitted.
- The respective principal amount of both the current policy and the Split Policy after the Policy Split Option is exercised must not be less than the minimum amount we permit at the time of your application.
- No cooling-off period will be applicable to the Split Policy.

Once your application is approved

- The terms and conditions of the Split Policy will follow that of the current policy. You may request to change policy currency, ownership, insured, contingent insured and beneficiary as you wish, following our prevailing rules.
- The guaranteed, non-guaranteed policy values and the balance of the Bonus Lock-in Account (if any) will be split according to the ratio of the principal amounts applicable to the current policy and the Split Policy.
- The total premiums paid or one-time premium paid (as applicable) for the basic plan will be adjusted according to the new principal amounts of the current policy and the Split Policy, and will be used to calculate the death benefit.
- Any previous instruction of Death Benefit Settlement Option will be kept under the current policy.
- Any designation made under the Mental Incapacity Option will be kept under the current policy.
- Educational Merit Benefit will only be payable once under the current policy, which is the original policy that you purchase with full premium payment ("Principal Policy"). Educational Merit Benefit will not be paid under any of the Split Policies.
- The add-on plans (if any) will be kept under the current policy, subject to our prevailing rules and regulations.

Cover at a glance (continued)

Non-Guaranteed Bonuses (Reversionary Bonus and Terminal Bonus (if any))

The following non-guaranteed bonuses will be declared to your policy at least once per year starting from the end of the 3rd policy year:

Reversionary Bonus (if any)

- Non-guaranteed bonus that may be cashed out or left to accumulate in the policy.
- Face value forms a permanent addition to your policy once declared, payable as part of the death benefit, according to the death benefit calculation.
- Cash value is non-guaranteed and payable upon withdrawal, policy surrender or termination, which is not guaranteed and may be zero.

Terminal Bonus (if any)

- Non-cumulative, non-guaranteed bonus.
- Amount valid until next declaration.
- Amount in each declaration may be greater or less than the previous amount based on a number of factors, including but not limited to investment returns and general market volatility.
- Face value is non-guaranteed and payable as part of the death benefit, according to the death benefit calculation, which is not guaranteed and may be zero.
- Cash value is non-guaranteed and payable upon withdrawal, policy surrender or termination.

Bonus Lock-in Option

Within 30 days after the end of each policy year, starting from the end of the 15th policy year, you may apply to exercise the Bonus Lock-in Option once per policy year.

Transfer of Lock-in Amount

You can decide on what percentage of the Reversionary Bonus (if any) and Terminal Bonus (if any) to transfer, subject to the following rules:

- The percentages of the Reversionary Bonus (if any) and Terminal Bonus (if any) transferred into your Bonus Lock-in Account must be identical to each other.
- The percentages cannot be less than 10% or more than 70% (minimum and maximum percentages are subject to our prevailing rules and regulations) and the Lock-in Amount is subject to a minimum amount that is determined by us from time to time.
- The calculation of the Lock-in Amount is based on the latest cash value of the Reversionary Bonus (if any) and the latest cash value of the Terminal Bonus (if any) after deducting all outstanding debt (if any) under the policy (up to a maximum deduction amount equal to the Lock-in Amount).
- Once the Lock-in Amount is transferred into the Bonus Lock-in Account, the Reversionary Bonus (if any) and Terminal Bonus (if any) which we may declare as at the relevant policy year and in future will be reduced accordingly, thus reducing the future value of the policy.

Value of the Bonus Lock-in Account

- Any balance in your Bonus Lock-in Account may accumulate interest at a non-guaranteed rate as determined by us from time to time.
- Subject to rules and regulations prevailing at the time, you may withdraw cash from Bonus Lock-in Account anytime.
- Upon exercising the Currency Exchange Option, the value of the Bonus Lock-in Account will be converted to the new policy currency using the prevailing market exchange rates.

Cover at a glance (continued)

First-in-market[^] Bonus Unlock Option

Within 30 days after the end of each policy year, starting from one year after you have exercised the Bonus Lock-in Option, you may apply to exercise the Bonus Unlock Option once per policy year.

Transfer into the Reversionary Bonus (if any) and Terminal Bonus (if any)

You can decide on a certain percentage of the latest value of the Bonus Lock-in Account to transfer as Reversionary Bonus (if any) and Terminal Bonus (if any), subject to the following rules:

- The percentage must be between 10% and 100% (minimum and maximum percentages are subject to our prevailing rules and regulations).
- The calculation of the amount to be transferred as the Reversionary Bonus (if any) and Terminal Bonus (if any) is based on the latest value of the Bonus Lock-in Account in effect as of the date of approval, after deducting all outstanding debt (if any) under the policy.
- The unlock amount is equal to the non-guaranteed cash values of Reversionary Bonus (if any) and Terminal Bonus (if any) to be transferred upon unlock.
- Once the unlock amount is transferred as the Reversionary Bonus (if any) and Terminal Bonus (if any), any Reversionary Bonus and Terminal Bonus which we may declare as at the relevant policy year and in future will be adjusted. The unlock amount will be changed from guaranteed value in the Bonus Lock-in Account to non-guaranteed value as Reversionary Bonus (if any) and Terminal Bonus (if any).
- The timing and frequency of exercising the Bonus Unlock Option may significantly affect the return of your policy. The unlocked part may be subject to the risk of higher investment return volatility whenever you exercise the Bonus Unlock Option.

[^] Bonus Unlock Option was pioneered by AIA in the Global Power Multi-Currency Plan 2 on 5 October 2022.

Surrender Benefit

The surrender benefit will include:

- guaranteed cash value; plus
- non-guaranteed cash value of the Reversionary Bonus (if any); plus
- non-guaranteed cash value of the Terminal Bonus (if any); plus
- any remaining balance of the Bonus Lock-in Account (if applicable).

We will deduct all outstanding debt (if any) under the policy before we make the payment.

Change of Insured Option

You may exercise the change of insured under the Change of Insured Option as many times as you wish, subject to our approval.

At the time of applying to exercise the Change of Insured Option

- You may opt to change the insured of the policy during the lifetime of the current insured and after the end of the 1st policy year.
- You and the beneficiary must have insurable interest in the proposed new insured.
- The proposed new insured must be between 15 days and 60 years of age, at the time of application.
- No medical examination is required for the proposed new insured if the total annual premiums or one-time premium payment does not exceed the aggregate limit set for such insured, subject to our prevailing rules and regulations.

After the change of insured

- All existing add-on plans will automatically terminate. Add-on plans may be re-applied for and your policy values will not be affected.

Cover at a glance (continued)

Contingent Insured Option

You may exercise the change of contingent insured under the Contingent Insured Option as many times as you wish, subject to our approval.

At the time of designating the Contingent Insured

- Subject to our approval, there is no limit on the number of times you can designate, modify or remove a contingent insured during the lifetime of the current insured.
- The proposed contingent insured must be between 15 days and 60 years of age.
- You and the beneficiary must have insurable interest in the proposed contingent insured.
- There can only be one contingent insured per policy at any time during the benefit term.

Upon the passing of the current insured

- You may opt to change the new insured of the policy to the contingent insured.
- The contingent insured must be age 60 or under to be eligible to become the new insured.
- No medical examination is required for the contingent insured if the total annual premiums or one-time premium payment does not exceed the aggregate limit set for such insured, subject to our prevailing rules and regulations.
- The contingent insured needs to be approved to become the new insured within a year from the passing of the current insured, otherwise the death benefit at the date of death of the insured will become payable to the beneficiary.

Upon the contingent insured becoming the new insured

- All existing add-on plans (if any) will automatically terminate. Afterwards, add-on plans may be re-applied for and your policy values will not be affected.
- You may designate a new contingent insured afterwards.

Cover at a glance (continued)

Mental Incapacity Option

After the end of the 3rd policy year, you may designate in advance (i) an aged 18 or above family member as the designated recipient and (ii) the designated percentage of policy value, subject to our approval. In the event you are diagnosed as a permanent mentally incapacitated person, upon application by the designated recipient, the designated recipient may receive payment equal to your designated percentage of policy value, subject to our approval, applicable laws and our prevailing rules and conditions.

- You must also be the insured at the time of application to designate a designated recipient and the designated percentage of policy value, and at the time application is made by the designated recipient for payment under this option.
- The designated recipient must be your spouse, parent, child, sibling, grandparent, grandchild, or any other relationship as approved by us.
- The designated percentage chosen by you cannot be less than 10% or more than 100% of the policy value (such policy value includes the guaranteed cash value, the latest cash values of non-guaranteed Reversionary Bonus (if any) and Terminal Bonus (if any), and any value in the Bonus Lock-in Account (if applicable)). The minimum and maximum designated percentages are subject to change at our sole discretion and are subject to our prevailing rules and regulations.
- A “mentally incapacitated person” means a person who is incapable, by reason of mental incapacity (as defined under the Mental Health Ordinance, Cap. 136 Laws of Hong Kong SAR or under Article 122 of the Macau Civil Code, depending on the place where the policy is issued), of managing and administering his / her property and affairs. The diagnosis must be supported by 2 registered medical practitioners who are psychiatrists or neurologists (or proof provided pursuant to applicable laws which is acceptable to us).
- Subject to our approval, if you remain the insured, you may apply to change or remove the designated recipient or to change the designated percentage of policy value as many times as you wish before payment is made under the Mental Incapacity Option.
- This option can only be exercised for payment once per policy.
- The actual payment amount under this option is subject to our prevailing rules and conditions and will be calculated based on the policy value on the date of our approval of the payment. We will deduct all outstanding debt (if any) under the policy before we make the payment under the Mental Incapacity Option.
- The payment will be made by and in the following sequence: (i) cashing out part or all of any value in the Bonus Lock-In Account (if applicable); and / or (ii) cashing out part or all of the cash value of Reversionary Bonus (if any) and the associated cash value of Terminal Bonus (if any); and / or (iii) surrender or partial surrender of the policy. Payment under this option will therefore reduce the future value of the policy.
- If partial surrender of the policy is triggered in the course of payment under this option, the guaranteed cash value and the principal amount of the policy will be reduced. The subsequent guaranteed cash value, face values and cash values of Reversionary Bonus (if any), face values and cash values of Terminal Bonus (if any), total premiums paid or one-time premium paid (as the case may be) for the basic plan under the death benefit will all be reduced based on the reduced principal amount. Therefore, such payment will reduce the death benefit, the surrender benefit and the future value of the policy.
- If surrender of the policy is triggered in the course of payment under this option, the policy will terminate and no death benefit will be payable.

Cover at a glance (continued)

Death Benefit

The death benefit will include the higher of:

- i. 105% of the total premiums paid or one-time premium paid (if applicable) for the basic plan; or
- ii. the sum of:
 - the guaranteed cash value of the policy;
 - the face value of Reversionary Bonus (if any) in the policy; and
 - the face value of Terminal Bonus (if any) in the policy;

plus any remaining balance of the Bonus Lock-in Account (if applicable).

We will deduct all outstanding debt (if any) under the policy before we make the payment to the beneficiary.

Accidental Death Benefit

In addition to the death benefit, if the insured passes away due to a covered accident within the first year of the policy, the accidental death benefit (in policy currency) will equal to the total premiums paid or one-time premium paid (if applicable) of the basic plan. The maximum aggregate amount of the accidental death benefit with respect to the same insured under all **Global Power Multi-Currency Plan 3** policies is RMB600,000 / GBP60,000 / US\$100,000 / AUD100,000 / CAD100,000 / HK\$750,000 / EUR70,000 / SGD120,000 and the benefit payable under each policy will be prorated according to its total premiums paid or one-time premium paid (if applicable) for the basic plan.

Death Benefit Settlement Option

- During the lifetime of the insured, you can select specific benefit amount to be paid to your beneficiary at regular intervals chosen by you, starting from your designated date[^], provided that the total annual payment is equal to at least 2% of the sum of the death benefit and accidental death benefit.
- The remaining amount of the death benefit and accidental death benefit will be left with our company to accumulate interest at the non-guaranteed interest rate determined by us, until the full amount of the death benefit and accidental death benefit has been paid to the beneficiary.
- The death benefit settlement option is not available if the sum of the death benefit and accidental death benefit payable is less than US\$50,000*.

[^] The designated date is subject to our prevailing rules and regulations. If the insured passes away after the designated date, the first instalment payment of death benefit and accidental death benefit will be paid immediately after the claim is approved.

* If the policy is issued in currency other than US\$, the amount would be available in the respective policy currency and the prevailing exchange rate will be used to calculate the above amount.

Cover at a glance (continued)

Educational Merit Benefit

- Specified amount will be paid by us to reward certain academic achievement.
- The Educational Merit Benefit will only be payable once per policy throughout the policy term, subject to:
 - (i) if Policy Split Option has been exercised under the policy, Educational Merit Benefit will only be payable once under the Principal Policy and will not be paid under any of the split policies; and
 - (ii) the Educational Merit Benefit will only be payable once per policy regardless of whether Currency Exchange Option has been exercised under the policy.
- With respect to the same insured under all **Global Power Multi-Currency Plan 3** policies, the benefit is only payable once per life.
- If you have changed the insured of the policy through the Change of Insured Option or Contingent Insured Option, **Global Power Multi-Currency Plan 3** will only pay the benefit when the new insured achieves the required achievement at least one year after the change of insured and before age 25 of the new insured, provided Educational Merit Benefit has not yet been claimed under the policy. We reserve the right to change the terms and conditions of the Educational Merit Benefit from time to time without further notice.

Extension of Grace Period Benefit

- The ability to extend the grace period from 31 days to 365 days for payment of each premium due within one year starting from the premium due date.
- Only applicable to 3 years, 5 years and 10 years premium payment terms.
- The benefit will become payable if one of the specified events happen to the policy owner, these include (i) laid off and become involuntarily unemployed, (ii) legally married, (iii) legally divorced, (iv) his / her natural child is born, (v) adopted a child through legal means, (vi) purchased a new residential property or (vii) changed the principal location of residence[#].
- Once your application is approved, the grace period for late premium payment will be extended from 31 days up to 365 days.
- The Extension of Grace Period Benefit is available once per policy.

Please refer to the "Note for Extension of Grace Period Benefit for 3-year premium payment policy, 5-year premium payment policy and 10-year premium payment policy" below for further details.

[#] i.e. the city where the policy owner lives or intends to live for 185 days or more in policy year and which is shown as the place of residence of the policy owner in AIA's records.

Policy Loan

- You can borrow up to 90% of the total guaranteed cash value of the policy plus the non-guaranteed cash value of Reversionary Bonus (if any).
- Interest on a policy loan will be charged at a rate solely determined by AIA.

Underwriting

No medical examination is required for your application as long as the total annual premiums or one-time premium payment (if applicable) does not exceed the aggregate limit set for each insured, subject to our prevailing rules and regulations.

Important Information

This brochure does not contain the full terms and conditions of the policy. It is not, and does not form part of, a contract of insurance and is designed to provide an overview of the key features of this product. The precise terms and conditions of this plan are specified in the policy contract. Please refer to the policy contract for the definitions of capitalised terms, and the exact and complete terms and conditions of cover. In case you want to read policy contract template before making an application, you can obtain a copy from AIA. This brochure should be read along with the illustrative document (if any) and other relevant marketing materials, which include additional information and important considerations about this product. We would like to remind you to review the relevant product materials provided to you and seek independent professional advice if necessary.

This brochure is for distribution in Hong Kong only.

Bonus Philosophy

This is a participating insurance plan in which we share a portion of the profits earned on it and related participating insurance plans with the policy owners. It is designed to be held long term. The premiums of a participating insurance plan will be invested in a variety of assets according to our investment strategy. The cost of policy benefits (including guaranteed and non-guaranteed benefits as specified in your plan that may be payable on death or surrender, as well as charges we make to support policy guarantees (if applicable)) and expenses will be deducted as appropriate from premiums of the participating insurance plan or from the invested assets. We aim to ensure a fair sharing of profits between policy owners and shareholders, and among different groups of policy owners.

Divisible surplus refers to profits available for distribution back to policy owners as determined by us. The divisible surplus that will be shared with policy owners will be based on the profits earned from your plan and similar plans or similar groups of policies (as determined by us from time to time by considering factors such as benefit features, policy currencies and period of policy issuance). Divisible surplus may be shared with the policy owners in the form of reversionary bonuses and terminal bonuses as specified in your policy.

We review and determine the bonus amounts payable to policy owners at least once per year. Divisible surplus depends on the investment performance of the assets which we invest in and the amounts of benefits and expenses we need to pay for the plan. It is therefore inherently uncertain. Nevertheless, we aim to deliver relatively stable bonus payments over time through a smoothing process by spreading out the gains and losses over a period of time. The actual bonuses declared may be different from those illustrated or projected in any

insurance plan information provided (e.g. benefit illustrations) depending on whether the divisible surplus, past experience and / or outlook are different from what we expected. If bonuses are different from our last communication, this will be reflected in the policy anniversary statement.

A committee has been set up to provide independent advice on the determination of the bonus amounts to the Board of the Company. The committee is comprised of members from different control functions or departments within the organisation both at the AIA Group level as well as Hong Kong local level, such as office of the Chief Executive of the Company, legal, compliance, finance, investment and risk management. Each member of the committee will endeavour to exercise due care, diligence and skill in the performance of his or her duties as a member. The committee will utilise the knowledge, experience, and perspectives of each individual member to assist the Board in the discharge of its duty to make independent decisions and to manage the risk of conflict of interests, in order to ensure fair treatment between policy owners and shareholders, and among different groups of policy owners. The actual bonuses, which are recommended by the Appointed Actuary, will be decided upon the deliberation of the committee and finally approved by the Board of Directors of the Company, including one or more Independent Non-Executive Directors, and with written declaration by the Chairman of the Board, an Independent Non-Executive Director and the Appointed Actuary on the management of fair treatment between policy owners and shareholders.

To determine the bonuses of a participating policy, we consider both past experience and the future outlook of all factors including, but not limited to, the following:

Investment returns: include interest earnings, dividends and any changes in the market value of the backing assets, i.e. the assets in which we invest your premiums (after deducting the cost of policy benefits and expenses). Depending on the asset allocation adopted for the insurance plan, investment returns could be affected by fluctuations in interest income (both interest earnings and the outlook for interest rates) and various market risks, including interest rate risk, credit spread and default risk, fluctuations in listed and private equity prices, real estate prices as well as foreign exchange rates if the currency of the backing assets is different from the policy currency, etc.

Claims: include claims for death benefits and any other insured benefits under the insurance plan.

Surrenders: include policy surrenders, partial surrenders and policy lapses; and their corresponding impact on the backing assets.

Expenses: include both expenses directly related to the policy (e.g. commission, underwriting, issue and premium collection expenses) and indirect expenses allocated to the insurance plan (e.g. general administrative costs).

Some participating insurance plans allow the policy owners to place their annual dividends, guaranteed and non-guaranteed cash payments, guaranteed and non-guaranteed incomes, guaranteed and non-guaranteed annuity payments, and / or bonus and terminal dividend lock-in accounts with us, earning interest at a non-guaranteed interest rate. To determine such non-guaranteed interest rate, we consider the returns on the pool of assets in which these amounts are invested with reference to the past experience and future outlook. This pool of assets is segregated from other investments of the Company and may include bonds and other fixed income instruments.

For bonus philosophy and bonus history, please visit our website at <https://www.aia.com.hk/en/dividend-philosophy-history.html>



Investment Philosophy, Objective and Strategy

Our investment philosophy aims to deliver sustainable long-term returns in line with the insurance plan's investment objectives and the Company's business and financial objectives.

Our aforementioned objectives are to achieve the targeted long-term investment results while minimising volatility in investment returns to support the liabilities over time. They also aim to control and diversify risk exposures, maintain adequate liquidity and manage the assets with respect to the liabilities.

Our current long-term target strategy is to allocate assets attributed to this insurance plan as follows:

Asset Class	Target Asset Mix (%)
Bonds and other fixed income instruments	25% - 100%
Growth assets	0% - 75%

The bonds and other fixed income instruments predominantly include government and corporate bonds and are mainly invested in the United States, Canada, the United Kingdom and Asia-Pacific. Growth assets may include listed equity, equity mutual funds, physical real estate, real estate funds, private equity funds and private credit funds, and are mainly invested in the United States, Asia-Pacific and Europe. Growth assets generally have a higher long-term expected return than bonds and fixed income assets but may be more volatile in the short term. The range of target asset mix may be different for different participating insurance plans. Our investment strategy is to actively manage the investment portfolio i.e. adjust the asset mix dynamically over a range that can be wider than the target range in response to the external market conditions and the financial condition of the participating business. For example, there may be a smaller proportion of growth assets when interest rates are low and a larger proportion of growth assets when interest rates are high. When interest rates are low, the proportion of growth assets may be even smaller than the long-term target strategy, so as to allow us to minimise volatility in investment returns and to protect our ability to pay the guaranteed benefits under the insurance plans, whereas the proportion of the growth assets may be even larger than the long-term target strategy when interest rates are high to allow for the possibility that we may share more investment opportunities in growth assets with the policy owners.

Subject to our investment objectives, we may use a material amount of derivatives (such as through pre-investing partly or fully expected future premiums) to manage our investment risk exposure and for matching between assets and liabilities, for example, the effects of changes in interest rates may be moderated while allowing for more flexibility in asset allocation.

Our general currency strategy is to minimise currency mismatches for bonds and other fixed income instruments. For these investments, our current practice is to endeavour to currency-match asset purchases with the currency of the underlying policy (e.g. US Dollar assets will be used to back US Dollar insurance plans). However, subject to market availability and opportunity, bonds or other fixed income instruments may be invested in a currency other than the currency of the underlying policy and currency swaps may be used to minimise the currency risks. Currently assets are mainly invested in US dollars / the denominated currency. Growth assets may be invested in a currency other than the currency of the underlying policy and the selection of the currency is made according to our investment philosophy, investment objectives and mandate.

We will pool similar participating insurance plans for investment to determine the return and we will then allocate the return to specific participating insurance plans with reference to their target asset mix. Actual investments (e.g. geographical mix, currency mix) would depend on market opportunities at the time of purchase, hence may be different from the target asset mix.

The investment strategy is subject to change depending on the market conditions and economic outlook. Should there be any material changes in the investment strategy, we will inform policy owners of the changes, with underlying reasons and expected impact to the bonuses.

Key Product Risks

1. (Only applicable for a 3-year premium payment policy, a 5-year premium payment policy and a 10-year premium payment policy) You should pay premium(s) on time and according to the selected premium payment schedule. If you stop paying the premium before completion of the premium payment term, you may surrender the policy, otherwise, the premium will be covered by a loan taken out on the policy automatically.

(Applicable for an one-time premium payment policy, a 3-year premium payment policy, a 5-year premium payment policy and a 10-year premium payment policy) When the loan balance exceeds the sum of guaranteed cash value and cash value of Reversionary Bonus (if any) of the basic plan, the policy will be terminated and you will lose the cover. The surrender value of the policy will be used to repay the loan balance, and we will refund any remaining value.

2. The plan may make certain portion of its investment in growth assets. Returns of growth assets are generally more volatile than bonds and other fixed income instruments, you should note the target asset mix of the product as disclosed in this product brochure, which will affect the bonus on the product. The savings component of the plan is subject to risks and possible loss. Should you surrender the policy early, you may receive an amount considerably less than the total amount of premiums paid.
3. For one-time premium payment policy, they are subject to higher investment return volatility and thus are expected to have higher volatility on the bonuses payable, as compared to policies with a 3-year premium payment term, a 5-year premium payment term or a 10-year premium payment term which can benefit from cost averaging effect.
4. You may request for the termination of your policy by notifying us in written notice. Also, we will terminate your policy and you / the insured will lose the cover when one of the following happens:
 - the insured passes away, except when the contingent insured becomes the new insured;

- you do not pay the premium within 31 days (or up to 365 days under the Extension of Grace Period Benefit) of the due date and the policy has no cash value (only applicable for a 3-year premium payment policy, a 5-year premium payment policy and a 10-year premium payment policy); or
 - the outstanding debt exceeds the guaranteed cash value plus the non-guaranteed cash value of the Reversionary Bonus (if any) of the policy.
5. We underwrite the plan and you are subject to our credit risk. If we are unable to satisfy the financial obligations of the policy, you may lose your premium paid and benefits.
 6. You are subject to exchange rate risks for plans denominated in currencies other than the local currency. Exchange rates fluctuate from time to time. You may suffer a loss of your benefit values and the subsequent premium payments (if any) may be higher than your initial premium payment as a result of exchange rate fluctuations. You should consider the exchange rate risks and decide whether to take such risks.
 7. In case the policy currency is changed under the Currency Exchange Option, by exchanging your plan (i.e. **Global Power Multi-Currency Plan 3**) to the latest plan under the Global Power Series at the time of when you exercise the option, the adjustments on policy value may be significant (either positive or negative) and the amount of policy value after exercising the Currency Exchange Option may be considerably less than the total amount of premiums paid. Any future premiums will be adjusted if the Currency Exchange Option is exercised within the premium payment term. The approval of Currency Exchange Option's application and the availability of currency at the time of exercising the Currency Exchange Option will be subject to the prevailing laws and regulations.

Please note that there could be a material difference between your plan and the latest plan available under the Global Power Series at the time when you exercise the Currency Exchange Option. Material difference includes but not limited to:

- product features (i.e. benefits, policy terms and conditions, investment strategy, target asset mix, relevant investment return and limitation and policy contract); and
- the availability of Currency Exchange Option, and in a worst case scenario, it may only be a one-time option under your plan depending on the future new plan's features.

You shall not purchase this product solely for the Currency Exchange Option.

Please carefully evaluate the difference between the current plan and the latest plan under the Global Power Series available for exchange when you exercise the Currency Exchange Option and consider whether the latest plan suits your needs.

8. When applying for the Bonus Unlock Option, a new benefit illustration must be signed and the application cannot be withdrawn once submitted. After exercising the Bonus Unlock Option, the unlocked part will be subject to the risk of higher investment return volatility because the latest value in the Bonus Lock-in Account will be unlocked as non-guaranteed Reversionary Bonus (if any) and Terminal Bonus (if any). The cash value of Reversionary Bonus (if any), cash value and face value of Terminal Bonus (if any) may be adjusted over our declarations at least once per year and amount in each declaration may be greater or less than the previous amount based on a number of factors, including but not limited to investment returns and general market volatility. Even if you are dissatisfied with the investment return after exercising the Bonus Unlock Option, the unlock amount which is transferred as Reversionary Bonus (if any) and Terminal Bonus (if any) cannot be reversed to the original value under the Bonus Lock-in Account. You may apply for the Bonus Lock-in Option again at least one year later and such action cannot offset any loss you may suffer after exercising the Bonus Unlock Option.
9. Your current planned benefit may not be sufficient to meet your future needs since the future cost of living may become higher than they are today due to inflation. Where the actual rate of inflation is higher than expected, you may receive less in real terms even if we meet all of our contractual obligations.
10. As the cash value of Reversionary Bonus (if any) is non-guaranteed, there may be a risk of overloan when there is adjustment on the cash value of Reversionary Bonus (if any). Loan repayment within one month is required when there is an overloan, otherwise your policy will be terminated and you or the insured may lose the cover.
11. The projected total IRR and projected total breakeven year illustrated in this brochure are non-guaranteed and are based on the Company's bonus scales determined under current assumed investment return. The actual total IRR and projected total breakeven year may be based on several factors (including but not limited to investment returns, expenses, claims, surrenders, timing and frequency of exercising the Currency Exchange Option and Bonus Unlock Option) and may be less favourable or longer (as the case maybe) than those illustrated. In the worst scenario, the actual total IRR can be equal to the guaranteed IRR. There can be variance for IRR and breakeven year under different premium payment term, policy currency options and different plans under the Global Power Series since

they are totally independent. For IRR and breakeven year of **Global Power Multi-Currency Plan 3** policies with different plan options, please refer to relevant benefit illustrations. The projected total IRR of **Global Power Multi-Currency Plan 3** for specific policy currency is not indicative of future performance of future plans under the Global Power Series.

12. The designated family member under the Mental Incapacity Option may receive payment for one time per policy. Payment made under the Mental Incapacity Option will reduce the surrender benefit and the future value of your policy, and may also reduce the death benefit of your policy. Any payment made under this option cannot be reversed or cancelled, you are reminded to consider carefully before exercising this option and shall assess and understand any potential financial impact to you.

Key Exclusions to Accidental Death Benefit

Accidental Death Benefit will not cover any conditions that result from any of the following:

- self-destruction while sane or insane, participation in a fight or affray, being under the influence of alcohol or a non-prescribed drug
- war, service in armed forces in time of war or restoration of public order, riot, industrial action, terrorist activity, violation or attempted violation of the law or resistance to arrest
- racing on wheels or horse, scuba diving
- ptomaines or bacterial infection (except pyogenic infection occurring through an accidental cut or wound)
- air travel, including entering, exiting, operating, servicing or being transported by any aerial device or conveyance (except as a passenger of a commercial passenger airline on a regular scheduled passenger trip over its established passenger route)

The above list is for reference only. Please refer to the policy contract of this plan for the complete list and details of exclusions.

Note for Mental Incapacity Option

The existing designated recipient will be automatically revoked when one of the following happens:

- i. you designate a new designated recipient and it is approved by us; or
- ii. any change of policy owner or change of insured.

If we are notified or become aware that there is a guardian or committee appointed under the Mental Health Ordinance (Cap. 136 of the Laws of Hong Kong) (or a guardian or committee appointed under similar laws in the place where the policy is issued), or an attorney appointed by the policy owner pursuant to an enduring power of attorney covering the policy, then this Mental Incapacity Option will be cancelled and revoked and we will not make any payment under this option, unless we have received the written consent of such guardian, committee or attorney (as the case may be) for us to make such payment to the designated recipient. If we are notified or become aware that such guardian, committee or attorney has been appointed only after we have paid the designated recipient, we will not be liable to pay such guardian, committee, attorney or any other person under this option.

If there is (or in our reasonable belief there is) a dispute between the designated recipient and any other person, including but not limited to the guardian, committee, attorney, or beneficiary(ies), or if we may incur liability as a result of us making payment under this option, we reserve the right to withhold the payment under this option until such dispute or matter is resolved.

In the event of the death of the insured or the death of the designated recipient, no payment will be paid under the Mental Incapacity Option.

Note for Extension of Grace Period Benefit for 3-year premium payment policy, 5-year premium payment policy and 10-year premium payment policy

The Extension of Grace Period Benefit will cease on the earliest of the following dates:

- i. at the end of extended grace period,
- ii. in the case of Involuntary Unemployment, you fail to provide proof of continuous status of unemployment upon our request,
- iii. the date on which the policy owner has been changed,
- iv. the date on which any claims on waiver of premium under your basic plan is approved,
- v. at the end of premium payment term of your basic plan,
- vi. the date when any withdrawals or claims of your basic plan and / or add-on plans is made, if the premium payment mode after the payment of benefits is not monthly, and,
- vii. the date when you pay all outstanding premiums.

In the case of Involuntary Unemployment under the Extension of Grace Period Benefit, you must be employed under a continuous contract for not less than 24 months and be eligible for a severance payment upon termination under the employment or labour laws of Hong Kong (according to the place of policy issuance) prior to the involuntary unemployment. Further, such employment cannot be self-employment, employment by a family member (including spouse, parent, grandparent, child or grandchild) or employment as a domestic servant. The Extension of Grace Period Benefit starts on the premium due date at the time when we approve your claim and continues for up to 365 days. Proof of continuous unemployment is required by you upon our request. The Extension of Grace Period Benefit is not available if you were informed of your pending involuntary unemployment on or before the issue date or commencement date of the policy, whichever is later.

Claim for Extension of Grace Period Benefit must be submitted within the specific time.

The Extension of Grace Period Benefit could only be claimed once per policy and relevant proof is required. The approval of the Extension of Grace Period Benefit is subject to our prevailing rules and regulations, and the handling of policy during the extended grace period will be subject to our discretion.

Claim Procedure

If you wish to make a claim, you must send us the appropriate forms and relevant proof. You can get the appropriate claim forms in www.aia.com.hk, by calling the AIA Customer Hotline (852) 2232 8808 in Hong Kong, or by visiting any AIA Customer Service Centre. For details related to making a claim, please refer to the policy contract. If you wish to know more about claim related matter, you may visit "File A Claim" section under our company website www.aia.com.hk.

Suicide

If the insured commits suicide within one year from the date on which the policy takes effect, our liability will be limited to the refund of premiums paid (without interest) less any outstanding debt.

After exercising the Change of Insured Option or upon the contingent insured becoming the new insured, if the new insured commits suicide within one year from the effective date of change as recorded by us, our liability will be limited to the refund of premiums paid (without interest) or the sum of guaranteed cash value, cash value of Reversionary Bonus (if any), cash value of Terminal Bonus (if any) and any remaining balance of the Bonus Lock-in Account as at the date the new insured passes away, whichever is higher, less any outstanding debt.

Incontestability

Except for fraud or non-payment of premiums, we will not contest the validity of this policy after it has been in force during the lifetime of the insured for a continuous period of two years from the date on which the policy takes effect. This provision does not apply to any add-on plan providing accident, hospitalisation or disability benefits. After exercising the Change of Insured Option or upon the contingent insured becoming the new insured, such two-year period will be counted again starting from the effective date of change as recorded by us.

Warning Statement

Global Power Multi-Currency Plan 3 is an insurance plan with a savings element. Part of the premium pays for the insurance and related costs. If you are not happy with your policy, you have a right to cancel it within the cooling-off period and obtain a refund of any premiums and any levy paid. A written notice signed by you should be received by AIA's Customer Service Centre at 12/F, AIA Tower, 183 Electric Road, North Point, Hong Kong within the cooling-off period (that is, 21 calendar days immediately following either the day of delivery of the policy or the Cooling-off Notice to you or your nominated representative, whichever is earlier). After the expiration of the cooling-off period, if you cancel the policy before the end of the term, the projected total cash value may be less than the total premium you have paid.

Additional Important Information

Effective from 1 January 2018, all policy owners are required to pay a levy on each premium payment made for both new and in-force Hong Kong policies to the Insurance Authority (IA). For levy details, please visit our website at www.aia.com.hk/useful-information-ia-en or IA's website at www.ia.org.hk.

The levy rates and the maximum amount of levy to be paid by policy owners from 2018 till 2021 onwards are listed as below:

Policy Anniversary Date	Levy Rate	Maximum Levy (HKD)
		Long Term Business
From 1 January 2018 to 31 March 2019 (both dates inclusive)	0.04%	\$40
From 1 April 2019 to 31 March 2020 (both dates inclusive)	0.06%	\$60
From 1 April 2020 to 31 March 2021 (both dates inclusive)	0.085%	\$85
From 1 April 2021 onwards (inclusive of that date)	0.1%	\$100

1. This product is a life insurance product issued by AIA. This is a participating policy. The underwriting risks, financial obligations and support functions associated with the policies issued by AIA are its responsibility.
2. The plan is an insurance plan with a savings element. Part of the premium(s) will be used to support the guaranteed benefit(s) such as guaranteed cash value and / or death benefit. Applicable fees and charges (including but not limited to cost of insurance and premium charge) will be deducted from the policy value, where appropriate.

The plan is a long-term insurance plan and is designed to be held until the end of the policy term. Should you terminate the policy before the end of the lock-in period (please refer to point 24 below), you may receive an amount considerably less than the total amount of premium paid and you may lose all the premiums paid. The premium of the plan should be paid in full for the whole payment term.

3. At AIA's discretion, AIA may distribute the surplus from AIA's profit from this product group to policy owners as bonuses. Reversionary Bonus (if any) is the share of any surplus that AIA determines each year starting from the end of the 3rd policy year. Terminal Bonus (if any) is a further share in any remaining surplus after Reversionary Bonus (if any) is distributed.

We aim to ensure a fair sharing of profits between policy owners and AIA shareholders, and among different groups of policy owners:

- i. Policy owners and AIA shareholders – Any profits and losses will be allocated among policy owners and AIA shareholders according to the defined shareholders' profit basis. This is reflected in the benefit illustration for the policy.
 - ii. Different groups of policy owners – Profits will vary among policies with different policy classes. For example, the investment experience would be different for policies started in different years, and therefore the bonus could be different.
4. Future investment performance is unpredictable. Through our smoothing process, we aim to deliver more stable bonuses payments by spreading out the gains and losses over a longer period of time. If the experience of **Global Power Multi-Currency Plan 3** (on factors including, but not limited to, investment returns, claims, surrenders and expenses) continues to be unfavorable over an extended period, it would lead to a decrease in future bonuses.

5. AIA's investment objectives are to achieve the targeted long-term investment results while minimising volatility in investment returns to support the liabilities over time. They also aim to control and diversify risk exposures, maintain adequate liquidity and manage the assets with respect to the liabilities. AIA's current long-term target strategy has an allocation to growth assets that ranges between 0% to 75%. The investment strategy is to actively manage the investment portfolio i.e.: adjust the asset mix dynamically over a range that can be wider than the target range in response to the external market conditions and the financial condition of the participating business. For example, there may be a smaller proportion of growth assets when interest rates are low and a larger proportion of growth assets when interest rates are high. When interest rates are low, the proportion of growth assets may be even smaller than the long-term target strategy, so as to allow us to minimise volatility in investment returns and to protect our ability to pay the guaranteed benefits under the insurance plans, whereas the proportion of the growth assets may be even larger than the long-term target strategy when interest rates are high to allow for the possibility that we may share more investment opportunities in growth assets with the policy owners. **You should understand the risk associated with purchasing a product with potentially significant proportion invested in growth assets (up to 75%), and consider whether it is suitable for your needs.**
6. AIA will send an anniversary statement to you upon every policy anniversary. The anniversary statement will include the guaranteed cash value, the face value and current cash value of Reversionary Bonus (if any), the face value and current cash value of Terminal Bonus (if any) and the value of the Bonus Lock-in Account (if applicable) as of certain date. While the face value of the Reversionary Bonus (if any) is guaranteed once it is declared in respect of death benefit, the cash values of Reversionary Bonus (if any) and Terminal Bonus (if any) stated on the anniversary statement or payable on early surrender or termination of the Policy may be subject to AIA's adjustment at its sole discretion and may be greater or lesser than the amount projected in the illustrative document.
7. No Reversionary Bonus (if any) and Terminal Bonus (if any) will be declared before the end of the 3rd policy year. Once declared, the face value of Reversionary Bonus (if any) is guaranteed in respect of death benefit. However, the face value of Terminal Bonus (if any), cash value of Reversionary Bonus (if any) and cash value of Terminal Bonus (if any) may change during the life of the policy; they are determined at AIA's sole discretion and may be zero.

The cash value of bonuses may be equal to or less than the face value of the bonuses and the amount will ultimately be at AIA's sole discretion. The cash value of bonuses may be influenced by various factors, for example abrupt change in market conditions, expectation of future investment return and the claims experience and hence may not always increase.

Terminal bonus (if any) is only valid until the next bonus declaration and while this would typically be annual, however, AIA reserves the right to determine the frequency of bonus declarations.

The need to be able to reflect changing market conditions in the face value of Terminal Bonus (if any), cash value of Reversionary Bonus (if any) and cash value of Terminal Bonus (if any) when a policy owner surrenders a policy is to protect the long-term interest of the remaining policy owners who may otherwise have their future bonus adversely impacted by the surrender. Interest accumulation is not applicable to Reversionary Bonus (if any) and Terminal Bonus (if any).

8. Cash withdrawals made will be deducted first from the value of the Bonus Lock-in Account (if applicable). Then, it will be deducted from the cash values of encashable Reversionary Bonus (if any) and the associated Terminal Bonus (if any) (collectively, "Cash Value of Encashable Bonuses"). Any further withdrawal which exceeds the remaining balance of the Cash Value of Encashable Bonuses will be deemed as partial surrender of the Policy and may lead to reduction of the principal amount of the Policy. Such further withdrawal will be deducted from the Guaranteed Cash Value and the associated cash value of Terminal Bonus (if any) (from and after the end of the 3rd policy year), given upon such surrender. Therefore, the subsequent Guaranteed Cash Value, face values and cash values of the Reversionary Bonus (if any) and the Terminal Bonus (if any) and total premiums paid as used in the calculation of the Death Benefit will be adjusted accordingly based on the reduced principal amount.
9. Cash Value of Encashable Bonuses (if any) consists of the projected cash value of Reversionary Bonus (if any) and the projected cash value of the associated Terminal Bonus (if any) which are based on current projections of surrender values and bonus scales, which are not guaranteed and may be zero. The encashment of cash value of the Reversionary Bonus (if any) will reduce the future value of your Policy. The reduction of the face values of Reversionary Bonus (if any) and Terminal Bonus (if any) will in turn reduce the total death benefit. When the cash value of the Reversionary Bonus (if any) is encashed (whether in whole or in part), its corresponding cash value of the Terminal Bonus (if any) will be encashed as well and the face value of the Reversionary Bonus (if any) will be reduced accordingly. The Terminal Bonus (if any) under the Policy will be adjusted after the encashment of any cash values of Reversionary Bonus (if any) and its corresponding cash value of the Terminal Bonus (if any). AIA reserves the right to determine the cash values of the Reversionary Bonus (if any) and the Terminal Bonus (if any) at its sole discretion.

10. The policy is subject to AIA's minimum principal amount requirements as determined by AIA from time to time, and no withdrawal will be allowed which has the effect of reducing the principal amount of the policy below the minimum principal amount required.

11. All guaranteed and non-guaranteed elements (if any) and benefits of insurance policy are subject to the credit risk of AIA and the payments of such benefits and performance of the insurance policy are the obligations and liabilities of AIA. In the worst case, you may lose all the premium paid and benefit amount.

Policy benefits are not the obligation of any insurance agency or distributor selling or distributing the policy, or by any of their affiliates, and none of them makes any representation or guarantees regarding the claims-paying ability of AIA. AIA is responsible for its own financial condition and contractual obligations. Policy owners bear the default risk in the event that AIA is unable to satisfy its financial obligations under the insurance policy(ies).

12. (Only applicable to a 3-year premium payment policy, a 5-year premium payment policy and a 10-year premium payment policy) Policy owner can choose to pay the entire premium and levy payment in advance for the basic plan in one lump sum (the amount of which varies by AIA's prevailing rules) at the time of application. This may prevent policy lapse if the new policy owner (if applicable) is unable to pay for the rest of the premium in the future. If the prepaid premium is unable to settle the entire future premium, policy owner will need to continue to pay the outstanding premium according to the premium payment schedule. After having deducted the first-year premium and levy payment from the prepaid premium, the rest of the prepaid premium will be deposited into AIA's Future Premium Deposit Account ("FPDA"). It will subsequently be used to settle outstanding premiums automatically when due. Premium left in the FPDA will earn non-guaranteed interest at the rate determined by AIA from time to time, while the non-guaranteed interest earned each year will be credited to the FPDA on the corresponding policy anniversary.

13. Provided that the policy owner is not the insured, if the policy owner passes away during premium payment term, the new policy owner will be the insured (for insured aged 18 or above), the Contingent Owner (for insured aged 17 or below and if Contingent Owner is named) or the successor to the policy owner's estate (for insured aged 17 or below and if no Contingent Owner is named). The new policy owner will need to continue paying premium(s) on time and according to the selected premium payment schedule (only applicable to a 3-year premium payment policy, a 5-year premium payment policy and a 10-year premium payment policy). Therefore, at the time of purchasing the policy and / or exercising

the Change of Insured Option or changing the insured through the Contingent Insured Option during premium payment term (if applicable), policy owner shall take into consideration the ability of new policy owner (if any) to meet the premium and levy payment obligation of the plan. If the new policy owner stops paying the premium before completion of the premium payment term for any reason, the new policy owner may surrender the policy, otherwise, the premium will be covered by a loan taken out on the policy automatically. When the loan balance exceeds the sum of guaranteed cash value and cash value of Reversionary Bonus (if any) of the policy, the policy will be terminated and the cover will be lost. Early surrender or termination of policy before the end of the lock-in period may result in losses in that policy owner may get back considerably less than the premiums paid and all the premiums paid may be lost. The cash values of Reversionary Bonus (if any) and Terminal Bonus (if any) payable on early surrender or termination of the policy may be subject to AIA's adjustment at its sole discretion.

14. Forward-Dated Change of Insured Instruction ("Forward Instruction"): Policy owner can apply to make or change a Forward Instruction under the Change of Insured Option so that the value of this policy may be passed on to the future generations on a target effective date specified by the policy owner (subject to AIA's prevailing rules), even if the policy owner may not be able to initiate the Change of Insured Option at a later stage due to certified adverse health condition. The Forward Instruction will only be executed on the target effective date (provided certain conditions are fulfilled in accordance with AIA's prevailing rules including but not limited to the provision of (i) a confirmation in respect of the Forward Instruction in AIA's prescribed form signed by the policy owner, the existing insured, the proposed new insured and Assignee (if applicable) or survival proof (if applicable) certified by registered medical practitioner in case any of the persons aforesaid suffer from an adverse health condition; and (ii) the latest copy of the identity card / passport of the proposed new insured). Upon AIA's approval of the application, an endorsement will be issued to the policy owner to record the effective date of change. The change shall not be valid until such change is evidenced by the said endorsement.

15. The Change of Insured Option under the plan must be made by the policy owner to AIA directly. After the end of the 1st policy year, when this option becomes available, policy owner can get the appropriate servicing form by calling the AIA Customer Hotline (852) 2232 8808 in Hong Kong or by visiting www.aia.com.hk or any AIA Customer Service Centre. Upon approval of the application by AIA, an endorsement will be issued to record the effective date of change. The change shall not be valid until such change is evidenced by the said endorsement. For details, please refer to the Change of Insured Option Endorsement.

16. The Contingent Insured Option under the plan must be made by the policy owner to AIA directly. While the Policy is in force and during the lifetime of the Insured, policy owner can get the appropriate servicing form by calling the AIA Customer Hotline (852) 2232 8808 in Hong Kong or by visiting www.aia.com.hk or any AIA Customer Service Centre. Upon approval of the designation, modification or removal of contingent insured by AIA, a confirmation letter will be issued to record such Designation or Removal. The Designation or Removal shall not be valid until such Designation or Removal is evidenced by the said confirmation letter. For details, please refer to the Contingent Insured Endorsement.

17. Within 30 days from the end of each policy year starting from the end of the 15th policy year, you may apply to exercise the Bonus Lock-in Option once per policy year, which lets you transfer an identical percentage of the latest cash values of Reversionary Bonus (if any) and Terminal Bonus (if any) into your Bonus Lock-in Account. Once you have exercised the Bonus Lock-in Option, the Reversionary Bonus (if any) and Terminal Bonus (if any) as at the relevant policy year will be reduced accordingly and the Reversionary Bonus (if any) and Terminal Bonus (if any) to be declared at all subsequent policy years will be adjusted accordingly. For the avoidance of doubt, exercising the Bonus Lock-in Option will not be treated as Partial Surrender thus no change to Principal Amount. The value of your Bonus Lock-in Account may accumulate at an accumulation interest rate that may be declared by AIA from time to time. This interest rate is not guaranteed and may even be zero percent during any given year.

Within 30 days from the end of each policy year starting from at least one year after you have exercised the Bonus Lock-in option, you may apply to exercise the Bonus Unlock Option once per policy year, which lets you transfer out a certain percentage of the latest value of the Bonus Lock-in Account as Reversionary Bonus (if any) and Terminal Bonus (if any). Once you have exercised the Bonus Unlock Option, the Reversionary Bonus (if any) and Terminal Bonus (if any) as at the relevant policy year will be increased accordingly and the Reversionary Bonus (if any) and Terminal Bonus (if any) to be declared at all subsequent policy years will be adjusted accordingly. For the avoidance of doubt, exercising the Bonus Unlock Option will cause no change to Principal Amount.

18. Covered accident means an unforeseen and involuntary event which causes a bodily injury, subject to the conditions listed in the policy contract. Please refer to the policy contract for the exact and complete terms and conditions of cover as well as the definition of covered accident.

19. Add-on plans mean supplementary contracts as stated in the policy contract.

20. The above product information should be used with the understanding that AIA is not rendering legal, accounting or tax advice. You are advised to check with your personal tax advisor for advice relevant to your circumstances.

21. AIA is the insurance underwriter of this insurance plan and is solely responsible for all approvals, coverage and compensations of their insurance plans. All insurance applications are subject to AIA's underwriting and acceptance. AIA reserves the final right to approve any policy application. In case the policy application is declined, AIA will make full refund of the actual amount of premium and any levy paid by the customer without interest. AIA shall assume full responsibility for the contracts of respective insurance plans.

22. If your application omits facts or contains materially incorrect or incomplete facts, AIA has the right to declare the policy void.

23. Whether to apply for insurance coverage is your own individual decision.

24. The reference to "Lock-in period" (if any) is the guaranteed breakeven year in which guaranteed cash value equals to the total premium paid as illustrated in the illustrative document. The guaranteed breakeven year for **Global Power Multi-Currency Plan 3 for one-time premium payment term is 16 years for US\$ and AUD; 24 years for GBP; 17 years for HK\$ and CAD; 14 years for RMB; 24 years for EUR while 17 years for SGD. In annual premium payment mode, the guaranteed breakeven year for **Global Power Multi-Currency Plan 3** for 3-year premium payment terms is up to 17 years for US\$ and RMB; 51 years for GBP; 30 years for HK\$; 19 years for AUD; 38 years for CAD; 51 years for EUR while 35 years for SGD. In annual premium payment mode, the guaranteed breakeven year for **Global Power Multi-Currency Plan 3** for 5-year premium payment terms is up to 26 years for US\$ and AUD; 61 years for GBP; 42 years for HK\$; 51 years for CAD; 20 years for RMB; 61 years for EUR while 54 years for SGD. In annual premium payment mode, the guaranteed breakeven year for **Global Power Multi-Currency Plan 3** for 10-year premium payment terms is up to 35 years for US\$ and AUD; 69 years for GBP; 52 years for HK\$; 60 years for CAD; 31 years for RMB; 69 years for EUR while 63 years for SGD. The guaranteed breakeven year may be shorter or longer depending on the premium payment term, premium payment mode, policy currency and / or premium amount. Please refer to the illustrative document for the lock-in period applicable to your **Global Power Multi-Currency Plan 3** policy. **Early surrender or termination of your policy before the end of the lock-in period may result in losses in that you may get back considerably less than your premiums paid.****

25. If premium remains unpaid 31 days (or up to 365 days under the Extension of Grace Period Benefit) after the premium due date, you may surrender the policy. Otherwise, AIA will advance the premium due as an automatic loan so long as the sum of guaranteed cash value and the non-guaranteed cash value of Reversionary Bonus (if any) is sufficient to cover the premium in default and any outstanding debt.

You can apply for a policy loan and borrow up to 90% of the total guaranteed cash value of the policy plus the non-guaranteed cash value of Reversionary Bonus (if any). Where a policy loan is available and taken out, interest on the policy loan will be charged at a rate solely determined by us from time to time. Interests on loan amounts accrue on a daily basis and are due on each policy anniversary. Any interest unpaid when due will be added to the outstanding loan amount. The unpaid loan or policy debt (if any) on the policy will be deducted from the payment or proceeds (if any) under the policy. If the total outstanding loan amounts (including interest) owing to AIA under this policy (if any) exceed the sum of guaranteed cash value and the non-guaranteed cash value of Reversionary Bonus (if any) of the policy, the policy will be terminated.

26. Overloan occurs when the loan balance exceeds the sum of guaranteed cash value and cash value of Reversionary Bonus (if any) of the basic plan.

27. When overloan occurs, a letter will be sent to the policy owner, requesting payment of an amount not less than the amount specified in such letter within one month from the date of such letter in order to keep the policy in force.

28. Total surrender value / total cash value refers to the same value and these terms are used interchangeably.

29. Benefit illustration / illustrative document / proposal refers to the same document and these terms are used interchangeably.

30. The policy currency of this plan offers in Renminbi (RMB), British pound sterling (GBP), US dollar (US\$), Australian dollar (AUD), Canadian dollar (CAD), HK dollar (HK\$), Euro (EUR) and Singapore dollar (SGD). Any exchange rate fluctuation will have a direct impact on the amount of premium required and the value of your benefit(s) in designated dollar terms.

RMB is currently not freely convertible through banks in Hong Kong. Due to exchange controls and / or restrictions imposed on the convertibility, utilisation or transferability of RMB (if any) which in turn is affected by, amongst other things, the policies of the government of the People's Republic of China, there is no guarantee that disruption in the transferability, convertibility or liquidity of RMB will not occur. There is thus a likelihood that you may not be able to convert RMB received into other freely convertible currencies.

Any transaction involving currencies involves risks including, but not limited to, the potential for changing political and / or economic conditions that may substantially affect the price or liquidity of a currency. Policy owner should pay heed to the presence of the potential currency risks and decide whether to take such risks.

31. Any post sales service request including but not limited to exercising the Policy Split Option, Mental Incapacity Option, Bonus Lock-In and Bonus Unlock Option under the plan must be made by the policy owner or the designated recipient (only applicable to Mental Incapacity Option) to AIA directly. Policy owner or the designated recipient (only applicable to Mental Incapacity Option) can apply to exercise any post sale service by calling the AIA Customer Hotline (852) 2232 8808 in Hong Kong or by visiting any AIA Customer Service Centre.

32. Any request to exercise the Currency Exchange Option under the plan must be made by the policy owner to AIA directly. Provided that the policy is in force, such request is available once per policy year starting from the end of the 2nd policy year. Policy owner can apply to exercise the option within 30 days after the end of a policy year by calling the AIA Customer Hotline (852) 2232 8808 in Hong Kong or by visiting any AIA Customer Service Centre. Upon approval of your signed and submitted application by AIA, a confirmation letter will be issued to record such change and the change shall not be effective until such change is evidenced by the said confirmation letter. Policy currency of add-on plan(s) (if any) should be same as the basic plan. If the add-on plan does not offer the currency selected under the new basic plan, it will be terminated once the application is approved. For the avoidance of doubt, the insured will lose the coverage of such add-on plan.

33. Please note that there could be a material difference between your plan (i.e. Global Power Multi-Currency Plan 3) and the latest plan available under the Global Power Series at the time when you exercise the Currency Exchange Option. Material difference includes but not limited to:

- **product features (i.e. benefits, policy terms and conditions, investment strategy, target asset mix, relevant investment return, limitation and policy contract); and**
- **the availability of Currency Exchange Option, and in a worst case scenario, it may only be a one-time option under your plan depending on the future new plan's features.**

You shall not purchase this product solely for the Currency Exchange Option.

Please carefully evaluate the difference between the current plan and the latest plan under the Global Power Series available for exchange when you exercise the Currency Exchange Option and consider whether the latest plan suits your needs.

34. The approval of the application for exercising the Currency Exchange Option and the availability of currency at the time of exercising the Currency Exchange Option will be subject to the prevailing laws and regulations. Please note that the new plan under the Global Power Series after exercising the Currency Exchange Option may not have Currency Exchange Option available, and in a worst case scenario, it may only be a one-time option if the new plan does not have Currency Exchange Option; one time option refers to the application for exercising the Currency Exchange Option under your original plan (i.e. Global Power Multi-Currency Plan 3) to the latest plan under the Global Power Series in your designated policy currency.

35. In case your new designated policy currency under current policy currency selection is not available in the latest plan under the Global Power Series, AIA will offer the last available plan under the Global Power Series with your new designated policy currency to exercise the Currency Exchange Option, subject to prevailing laws and regulation.

36. Even Citibank (Hong Kong) Limited may not be distributing the latest available plan under the Global Power Series, you can still exercise the Currency Exchange Option with the assistance of AIA. Exercising the Currency Exchange Option would be handled by AIA directly and you have to approach AIA to submit application. With the assistance of AIA, you should be able to understand the differences between your plan and the latest plan available for exchange under the Global Power Series before exercising the Currency Exchange Option. For more details, you can call the AIA Customer Hotline (852) 2232 8808 in Hong Kong or visit any AIA Customer Service Centre.

37. Citibank (Hong Kong) Limited's role is limited to distributing the insurance product only and Citibank (Hong Kong) Limited shall not be responsible for any matters in relation to the products provided (including but not limited to account / policy maintenance matters).

Please contact the relevant licensed bank staff or call AIA Customer Hotline for details

Hong Kong ☎ (852) 2232 8808

🏠 aia.com.hk





Citibank (Hong Kong) Limited - Important Notes from the insurance agent

1. Citibank (Hong Kong) Limited, being registered with the Insurance Authority as a licensed insurance agency, acts as an appointed licensed insurance agent for AIA International Limited (the "Insurance Company").
2. Citibank (Hong Kong) Limited's role is limited to distributing insurance products of the Insurance Company only and Citibank (Hong Kong) Limited shall not be responsible for any matters in relation to the provision of the products.
3. Insurance products are products and obligations of the Insurance Company and not of Citibank (Hong Kong) Limited. Insurance products are not bank deposits or obligations of, or guaranteed or insured by Citibank (Hong Kong) Limited, Citibank, N.A., Citigroup Inc. or any of their affiliates or subsidiaries, or any local governmental agency.
4. In respect of an eligible dispute (as defined in the Terms of Reference for the Financial Dispute Resolution Centre in relation to the Financial Dispute Resolution Scheme) arising between you and Citibank (Hong Kong) Limited out of the selling process of any insurance product conducted by Citibank (Hong Kong) Limited as agent for Insurance Company or the processing of the related transaction, you may enter into a financial dispute resolution scheme process with Citibank (Hong Kong) Limited in accordance with the applicable rules in Hong Kong. However any dispute over the contractual terms of insurance products should be resolved directly between you and the Insurance Company.
5. All insurance applications are subject to Insurance Company's underwriting and acceptance.
6. The Insurance Company is solely responsible for all approvals, coverage, compensations and account maintenance in connection with its insurance products.
7. Citibank (Hong Kong) Limited will not render you any legal, accounting or tax advice. You are advised to check with your own professional advisor for advice relevant to your circumstances.
8. You are reminded to carefully review the relevant product materials provided to you and seek independent advice if necessary.
9. For any policy service enquiries, please contact the relevant licensed bank staff or the Insurance Company.



SAVINGS

GLOBAL POWER MULTI-CURRENCY PLAN 3 (GP3)

Plan a brighter future with flexible multi-currency options

Citibank (Hong Kong) Limited is an appointed insurance agent for AIA International Limited (Incorporated in Bermuda with limited liability). This product brochure is issued by AIA and is for distribution by Citibank (Hong Kong) Limited in Hong Kong only.

Limited offer: 3-year premium payment term



AIA International Limited
(Incorporated in Bermuda with limited liability)



**HEALTHIER, LONGER,
BETTER LIVES**